



3000 Pacific Drive, Norcross, GA 30071

Opportunity

- 43,250 sf available
- 3,801 sf of showroom/office
- 43,250 total building size
- 22'8" clear height
- 40' x 39' bay size
- 1 (9x10) Grade Level DI, 8 (8x10) DH
- 151' Building Depth
- Sprinkler System

Location



31

Miles to
Airport



2.6

Miles to
I-75



4

Miles to
I-285

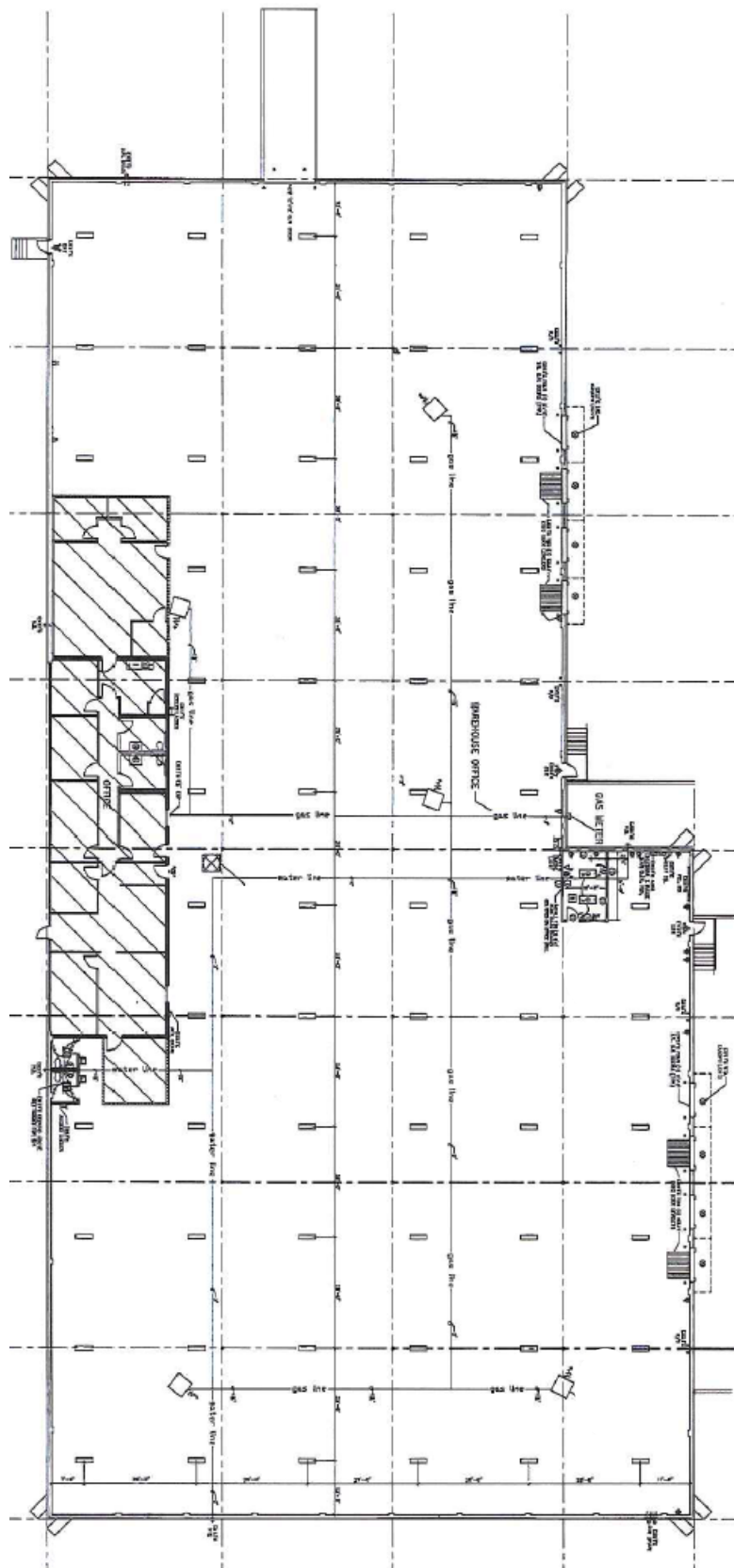
**For further
information**

Chet Koenig
Principal
+1 770 916 6130

avisonyoung.com

Industrial For Lease

3000 Pacific Drive, Norcross, GA



For further information

Owned by:



Chet Koenig
Principal
+1 770 916 6130
chet.koenig@avisonyoung.com

